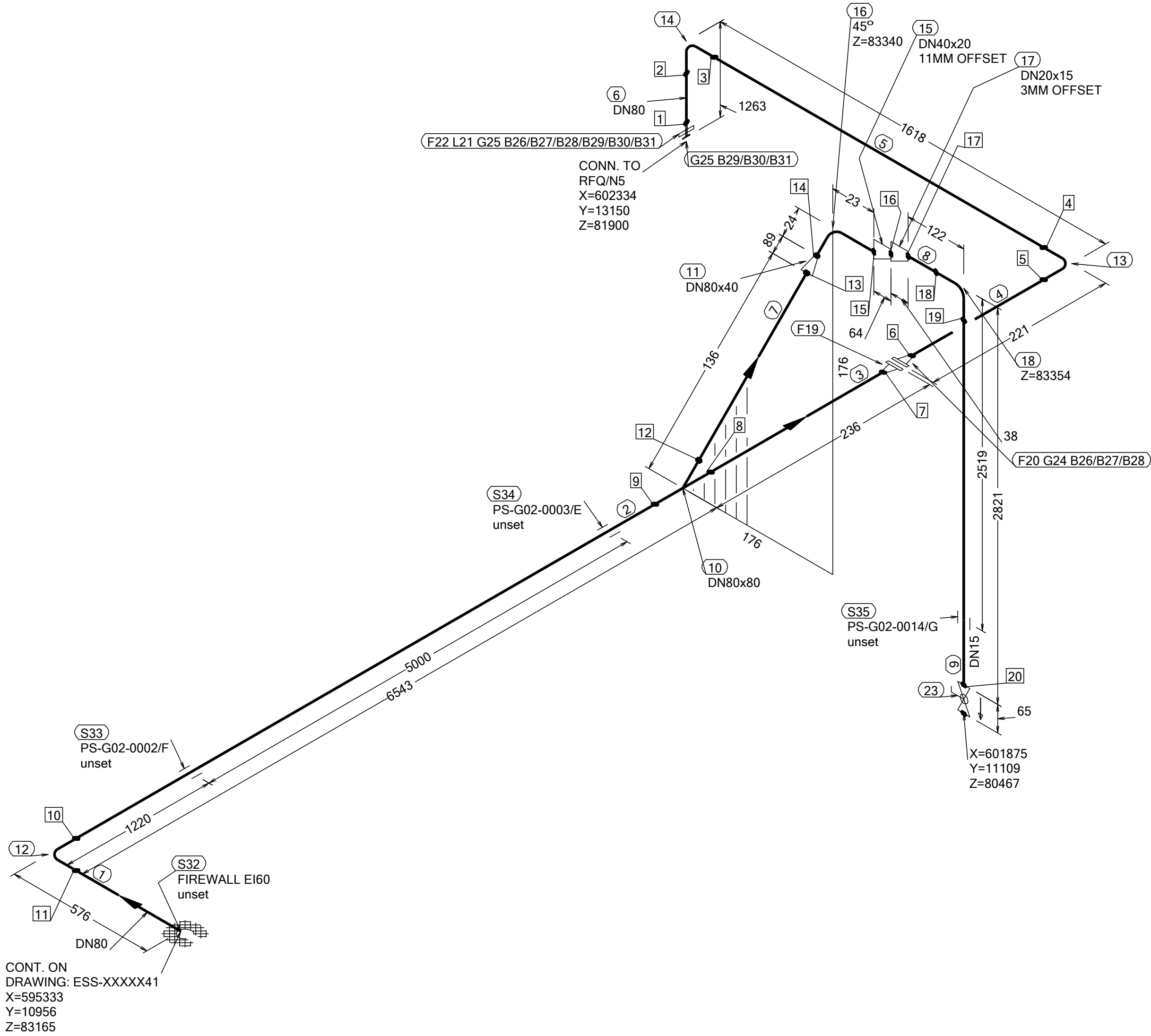



N (Y)



WELD	WPS
1	
2	
3	
4	
5	
6	
7	
8	
9	
10	
11	
12	
13	
14	
15	
16	
17	
18	
19	
20	

FABRICATION MATERIALS					
PT NO	COMPONENT DESCRIPTION	DN	MATERIAL	QTY (mm)	REMARKS
PIPE					
1	PIPE, SS-EN 10217-7, TC1, 88.9x2.0	80	EN 1.4404	462	
2	PIPE, SS-EN 10217-7, TC1, 88.9x2.0	80	EN 1.4404	6343	
3	PIPE, SS-EN 10217-7, TC1, 88.9x2.0	80	EN 1.4404	100	
4	PIPE, SS-EN 10217-7, TC1, 88.9x2.0	80	EN 1.4404	57	
5	PIPE, SS-EN 10217-7, TC1, 88.9x2.0	80	EN 1.4404	1390	
6	PIPE, SS-EN 10217-7, TC1, 88.9x2.0	80	EN 1.4404	1099	
7	PIPE, SS-EN 10217-7, TC1, 88.9x2.0	80	EN 1.4404	50	
8	PIPE, SS-EN 10217-7, TC1, 21.3x2.0	15	EN 1.4404	94	
9	PIPE, SS-EN 10217-7, TC1, 21.3x2.0	15	EN 1.4404	2793	
FITTINGS					
10	TEE EQUAL, SS-EN 10253-4, TYPE A, 88.9x2.0 / 88.9x2.0	80 x 80	EN 1.4404	1	
11	REDUCER CONC, SS-EN 10253-4, TABLE A.5, 88.9x2.0 / 48.3x2.0	80 x 40	EN 1.4404	1	
12	ELBOW 90, TYPE 3D, SS-EN 10253-4, TYPE A, 88.9x2.0	80	EN 1.4404	1	
13	ELBOW 90, TYPE 3D, SS-EN 10253-4, TYPE A, 88.9x2.0	80	EN 1.4404	1	
14	ELBOW 90, TYPE 3D, SS-EN 10253-4, TYPE A, 88.9x2.0	80	EN 1.4404	1	
15	REDUCER ECC, SS-EN 10253-4, TABLE A.5, 48.3x2.0 / 26.9x2.0	40 x 20	EN 1.4404	1	
16	ELBOW 45, TYPE 3D, SS-EN 10253-4, TYPE A, 48.3x2.0	40	EN 1.4404	1	
17	REDUCER ECC, SS-EN 10253-4, TABLE A.5, 26.9x2.0 / 21.3x2.0	20 x 15	EN 1.4404	1	
18	ELBOW 90, TYPE 3D, SS-EN 10253-4, TYPE A, 21.3x2.0	15	EN 1.4404	1	
FLANGES					
19	FLANGE WN, SS-EN 1092-1, TYPE 11, PN16	80		1	
20	FLANGE WN, SS-EN 1092-1, TYPE 11, PN16	80		1	
21	WELDING RING WITH COLLAR, SS-EN 1092-1 TYPE 35, PN16	80		1	
22	LOOSE FLANGE, SS-EN 1092-1, TYPE 02, PN16	80		1	
VALVES / IN-LINE ITEMS					
23	BALL VALVE, WORCESTER A44, SHORT, BW	15		1	

ERECTION MATERIALS					
PT NO	COMPONENT DESCRIPTION	DN	MATERIAL	QTY (mm)	REMARKS
GASKETS					
24	GASKET, EN 1514-1, TYPE XXX, T=1,5mm	80	EXPANDED GRAPHITE	1	
25	GASKET, EN 1514-1, TYPE XXX, T=1,5mm	80	EXPANDED GRAPHITE	1	
BOLTS					
26	HEXAGONAL NUT, M6M, ISO 4032	16	EN 1515-4, A4, HV≥250	16	
27	WASHER, BRB, ISO 7089	16	EN 1515-4, A4-70	32	
28	70 mm HEXAGONAL BOLT, M6S, ISO 4017	16	EN 1515-4, A4	16	
29	HEXAGONAL NUT, M6M, ISO 4032	16	EN 1515-4, A4	8	
30	WASHER, BRB, ISO 7089	16	EN 1515-4, A4	16	
31	80 mm HEXAGONAL BOLT, M6S, ISO 4017	16	EN 1515-4, A4-70	8	
SUPPORTS					
32	PENETRATION ATTA	80		1	
33	ESS Atta	80		1	
34	ESS Atta	80		1	
35	ESS Atta	15		1	

WPS See Weldlist TBN	Design Temperature 50degC	Tightening Torque For Flange Joints TBN	P&ID Drawing Number ESS-0060416	General Layout Drawing Number TBN	Calculation Report ESS-0058702	Inspection Plan TBN	Area Code G02
Quality Level For Weldign Acc To TBN	Design Pressure 10bar (g)	Bend Radius N/A	Bending Procedure N/A	Coupling Installation Procedure TBN	Pressure Test Program TBN	Alternate System Tag	Date (First Issue) 170522
Weld Joint Efficiency Factor (Longitudinal) 1,0	Test Pressure 14.3bar (g)	Insulation Specification N/A				Title/Name EUROPEAN SPALLATION SOURCE ERIC WATER COOLING SYSTEM CWM DIW SUPPLY FOR FEB ESS.ACC.E02.E03.WP0006	Scale -
Elevation (z) Acc To BCS	Quality Class MQC4-C	Insulation Thickness N/A					Format A2
	Media CWM	Allowance For Corrosion 0					Sheet 1 of 1
	Pipe Specification MQC4-W-PN16	Surface Treatment N/A					Revision A1

Rev	Description	Date	Drawn	Designed	Reviewed	Verified	Quality	Approved
A1	ISSUED FOR CDR	170522	FRPE	FRPE	AKCO	ANLU		